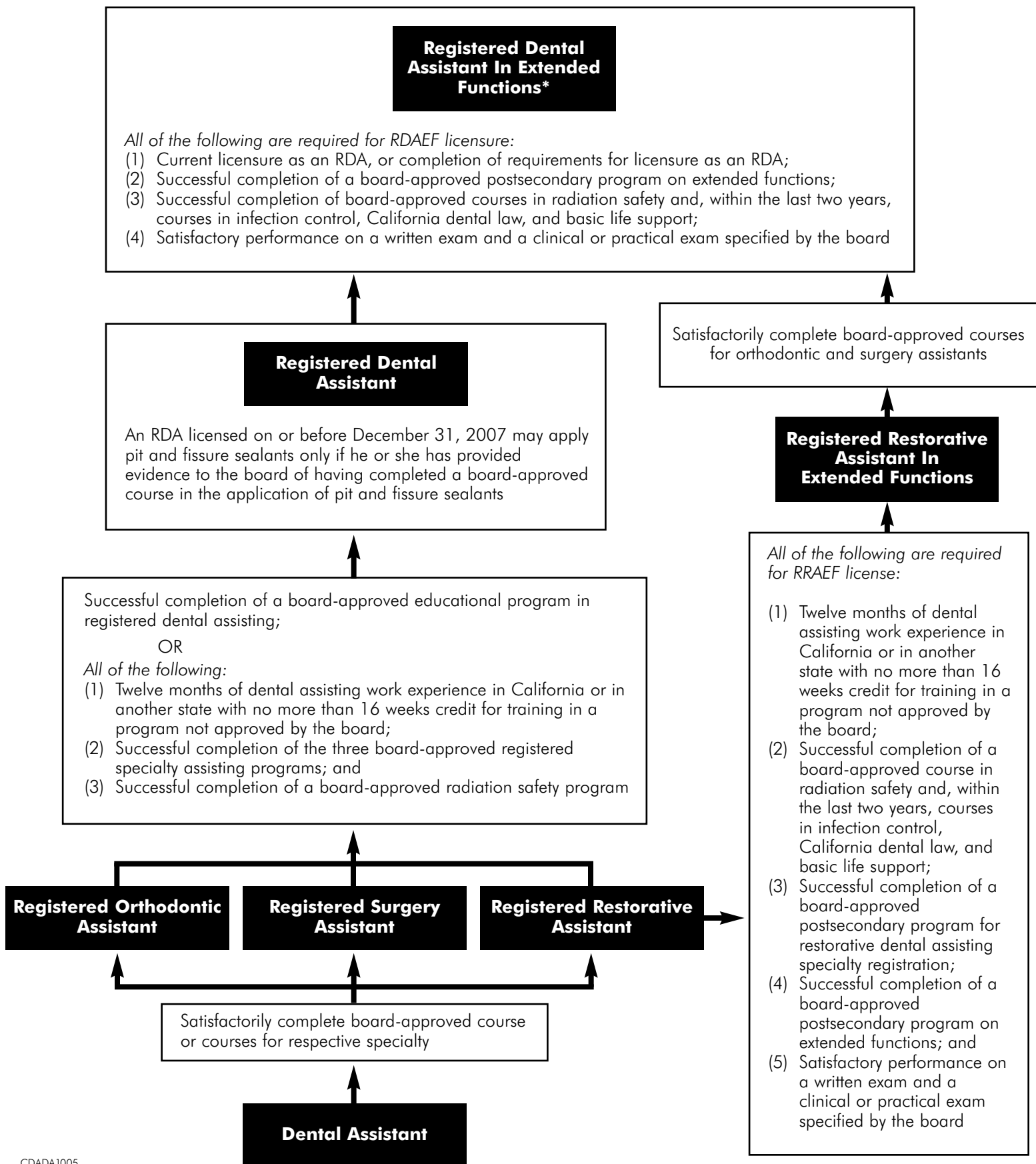


# DENTAL ASSISTING CATEGORIES

EFFECTIVE JANUARY 1, 2008

All assistants required to complete within one year of employment date

- (1) Board-approved courses in infection control and California law and
- (2) Course in basic life support offered by the American Red Cross, the American Heart Association, or any other course approved by the board as equivalent



## Dental Assistant

- Performs basic supportive procedures under supervision of a licensed dentist (Section 1750)  
Basic supportive dental procedures are those procedures that have technically elementary characteristics, are completely reversible, and are unlikely to precipitate potentially hazardous conditions for the patient being treated. They may be performed under general supervision.
- Complete within a year of employment date (1) board-approved courses in infection control and California law, and (2) course in basic life support offered by the American Red Cross, the American Heart Association, or any other courses approved by the board as equivalent.
- Successfully complete a radiation safety course approved by the board prior to operating radiographic equipment.
- Placing elastic orthodontic separators\*
- Removal of all orthodontic separators\*
- Removing ligature ties and arch wires\*
- Removing sutures\*
- Removing post-extraction and periodontal dressings\*
- Placing patient monitoring leads\*
- Other procedures authorized by the board through regulation

\* Effective January 1, 2006.

Registered Orthodontic Assistant	Registered Surgery Assistant	Registered Restorative Assistant
<p>May perform (Section 1750.3a)</p> <ul style="list-style-type: none"> <li>• Any duties that a dental assistant may perform</li> <li>• Mouth mirror inspections</li> <li>• Sizing, fitting, adjusting, repositioning, curing in a position approved by the supervising dentist, and removal of orthodontic bands and brackets</li> <li>• Coronal polishing</li> <li>• Removing excess cement from supragingival surfaces of teeth</li> <li>• Prepare teeth for bonding</li> <li>• Activating bleaching agents with nonlaser, light-curing devices</li> <li>• Removal of excess cement from coronal surfaces of teeth under orthodontic treatment by means of an ultrasonic scaler</li> <li>• Taking facebow transfers &amp; bite registrations</li> <li>• Placing metal separators</li> <li>• Placing ligature ties and arch wires</li> <li>• Taking orthodontic impressions</li> <li>• Other procedures authorized by the board through regulation</li> </ul>	<p>May perform (Section 1750.3b)</p> <ul style="list-style-type: none"> <li>• Any duties that a dental assistant may perform</li> <li>• Mouth mirror inspections</li> <li>• Monitoring of patients during the preoperative, intraoperative, and postoperative phases, using noninvasive instrumentation such as pulse oximeters, electrocardiograms, and capnography</li> <li>• Taking impressions for surgical splints and occlusal guards</li> <li>• Placement and removal of surgical dressings and removal of sutures</li> <li>• Adding medications, drugs and fluids, to intravenous lines using a syringe in the presence of a licensed dentist*</li> <li>• Removal of intravenous lines</li> <li>• Coronal polishing*</li> <li>• Other procedures authorized by the board through regulation</li> </ul> <p>* Only after providing evidence of having completed a board-approved course in the procedure</p>	<p>May perform (Section 1750.3c)</p> <ul style="list-style-type: none"> <li>• Any duties that a dental assistant may perform</li> <li>• Mouth mirror inspections</li> <li>• Sizing, fitting, adjusting, intraorally fabricating, temporarily cementing, and removing temporary crowns</li> <li>• Placing bases and liners on sound dentin</li> <li>• Removing excess cement from supragingival surfaces of teeth</li> <li>• Taking facebow transfers and bite registrations for diagnostic models for case study only</li> <li>• Taking impressions for space-maintaining appliances and occlusal guards</li> <li>• Coronal polishing</li> <li>• Applying pit and fissure sealants</li> <li>• Placing and removing temporary restorations</li> <li>• Activating bleaching agents with nonlaser, light-curing devices</li> <li>• Other procedures authorized by the board through regulation</li> </ul>

## Registered Dental Assistant

- May perform any duties that a dental assistant may perform (Section 1750)
- May perform any duties that a registered orthodontic assistant, surgical assistant, and restorative assistant may perform (Section 1750.3), and other procedures authorized by the board through regulation (Section 1751)
- Effective January 1, 2005 an RDA may apply pit and fissure sealants in a public health setting if he or she has provided evidence to the board of having completed a board-approved course in the application of pit and fissure sealants. Effective January 1, 2006 an RDA can perform these procedures in any setting after providing evidence to the board of having completed a board-approved course in this procedure.
- While employed by or practicing in a primary care clinic or specialty clinic licensed pursuant to Section 1204 of the Health and Safety Code, in a primary care clinic exempt from licensure pursuant to subdivision (c) of Section 1206 of the Health and Safety Code, or a clinic owned and operated by a hospital that maintains the primary contract with a county government to fill the county's role under Section 17000 of the Welfare and Institutions Code, may perform the following procedures under the direct supervision of a registered dental hygienist: (a) coronal polishing, after providing evidence to the board of having completed a board-approved course in that procedure; (b) application of topical fluoride; and (c) application of sealants, after providing evidence to the board of having completed a board-approved course in that procedure

### **Registered Restorative Assistant in Extended Functions**

May perform any duties that a registered restorative assistant may perform (Section 1750.3c), and other procedures authorized by the board through regulation (Section 1751)

### **Registered Dental Assistant in Extended Functions \***

- May perform any duties that a registered orthodontic assistant, surgical assistant, and restorative assistant may perform (Section 1750.3), and other procedures authorized by the board through regulation (Section 1751)
- While employed by or practicing in a primary care clinic or specialty clinic licensed pursuant to Section 1204 of the Health and Safety Code, in a primary care clinic exempt from licensure pursuant to subdivision (c) of Section 1206 of the Health and Safety Code, or a clinic owned and operated by a hospital that maintains the primary contract with a county government to fill the county's role under Section 17000 of the Welfare and Institutions Code, may perform the following procedures under the direct supervision of a registered dental hygienist: (a) coronal polishing, after providing evidence to the board of having completed a board-approved course in that procedure; (b) application of topical fluoride; and (c) application of sealants, after providing evidence to the board of having completed a board-approved course in that procedure

May perform any duties that a dental assistant may perform (Section 1750)

May perform the following procedures under direct supervision (Section 1753.1):

1. Cord retraction of gingivae for impression procedures
2. Taking impressions for cast restorations
3. Formulating indirect patterns for endodontic post and core castings
4. Fitting trial endodontic filling points
5. Drying canals, previously opened by the supervising dentist with absorbent point
6. Testing pulp vitality
7. Removing excess cement from subgingival tooth surfaces with a hand instrument
8. Fitting and cementing stainless steel crowns
9. Placing, condensing, and carving amalgam restorations
10. Placing class I, III, and V non-metallic restorations
11. Taking facebow transfers and bite registrations for fixed prostheses
12. Taking final impressions for tooth-borne, removable prostheses
13. Placing and adjusting permanent crowns for cementation by the dentist
14. Applying etchants for bonding restorative materials

\* RDAEFs licensed prior to January 1, 2008 may only perform procedures performed by an RDA and procedures 1,2,3,4,7, and 14 listed above, until he or she provides evidence of having completed a board-approved course or courses in the additional functions listed above, and an examination in the additional functions as specified by the board

### **Responsibilities of the Supervising Dentist**

- Responsible for determining the competency of the DA to perform basic supporting procedures
- Responsible for assuring each DA, ROA, RSA, RRA, RRAEF, RDA, and RDAEF completes within a year of employment date (1) board-approved courses in infection control and California law, and (2) course in basic life support offered by the American Red Cross, the American Heart Association, or any other course approved by the board as equivalent
- Responsible for determining the level of supervision required for ROAs, RSAs, and RRAs
- Must check and approve all direct supervision procedures performed by an RRAEF or RDAEF prior to the patient's dismissal from the office
- May utilize no more than three dental auxiliaries in extended functions

